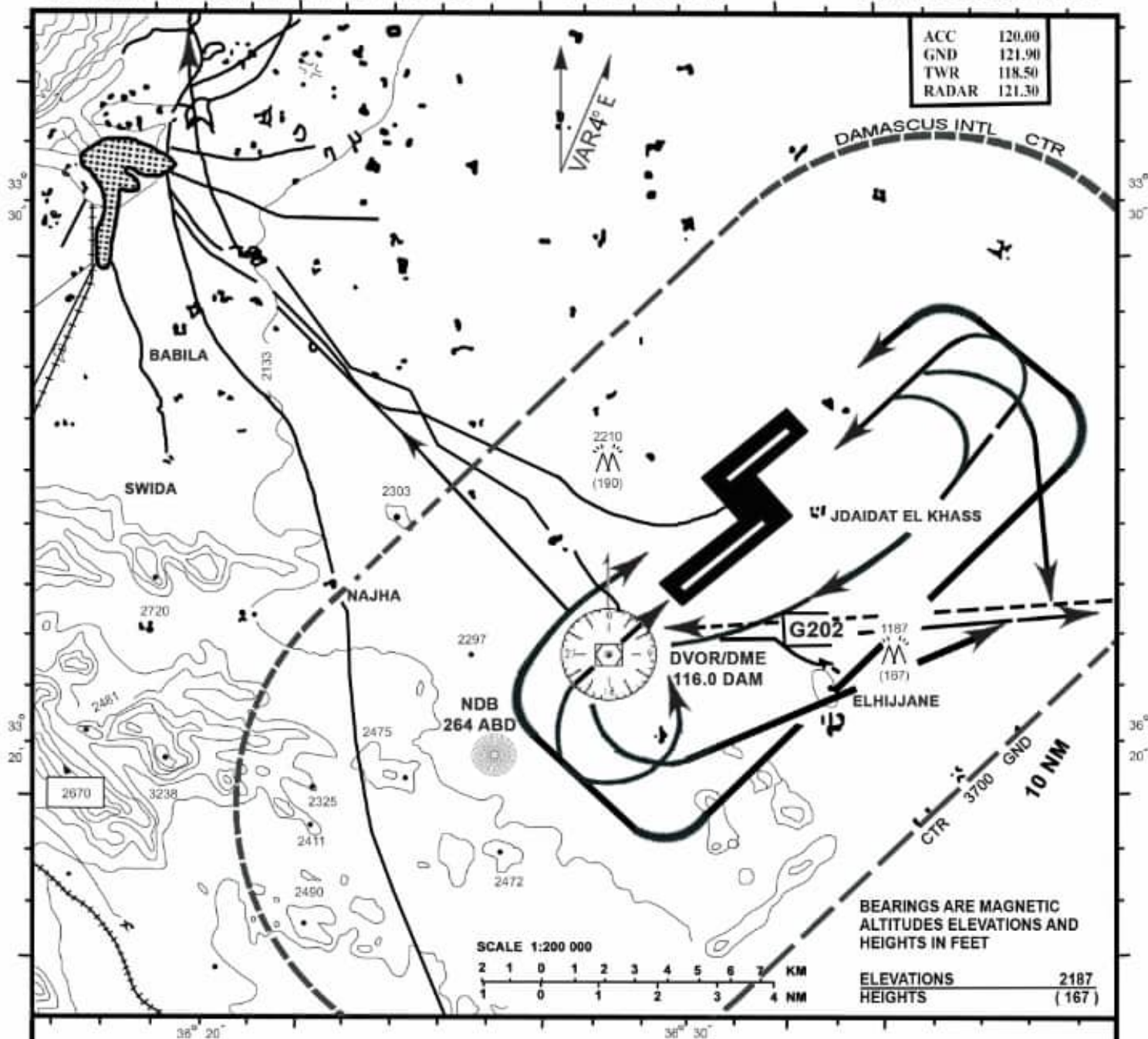


VISUAL APPROACH CHART - ICAO

ELEV 2020 FT

DAMASCUS / INTL



- 1- ALL VFR TRAFFIC BOUND TO DAMASCUS / INTL AIRPORT SHALL REPORT OVER DAM/DVOR AT AN ALTITUDE OF 5000 FT OR ABOVE BEFORE JOINING THE TRAFFIC CIRCUIT UNLESS INSTRUCTED BY AERODROME CONTROL TOWER .
- 2- ALL VFR TRAFFIC DEPARTING DAMASCUS / INTL AIRPORT SHALL FOLLOW THE DEPARTURE ROUTES ASSIGNED FOR IFR TRAFFIC.
- 3- TRAFFIC CIRCUITS FOR RUNWAYS 23 R / 23 L SHALL BE MADE TO THE LEFT, AND FOR RUNWAYS 05 R / 05 L SHALL BE MADE TO THE RIGHT.
- 4- TRAFFIC CIRCUITS FOR RUNWAYS 05 / 23 SHALL BE FLOWN IN ACCORDANCE WITH THE CHART AS LARGE TRAFFIC CIRCUIT SMALLER TRAFFIC CIRCUIT DEPENDING ON THE TYPE OF AIRCRAFT COULD BE FLOWN.
- 5- DURING THE FINAL APPROACH TO LAND THE GLIDE SLOPE ANGLE AS INDICATED BY THE PAPI SHALL NOT BE UNDER FLOWN.
- 6- THE ABOVE DESCRIBED PROCEDURES ALSO APPLY TO HELICOPTERS.