

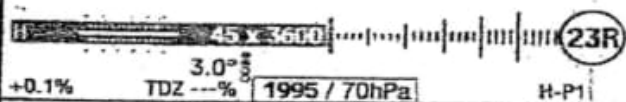
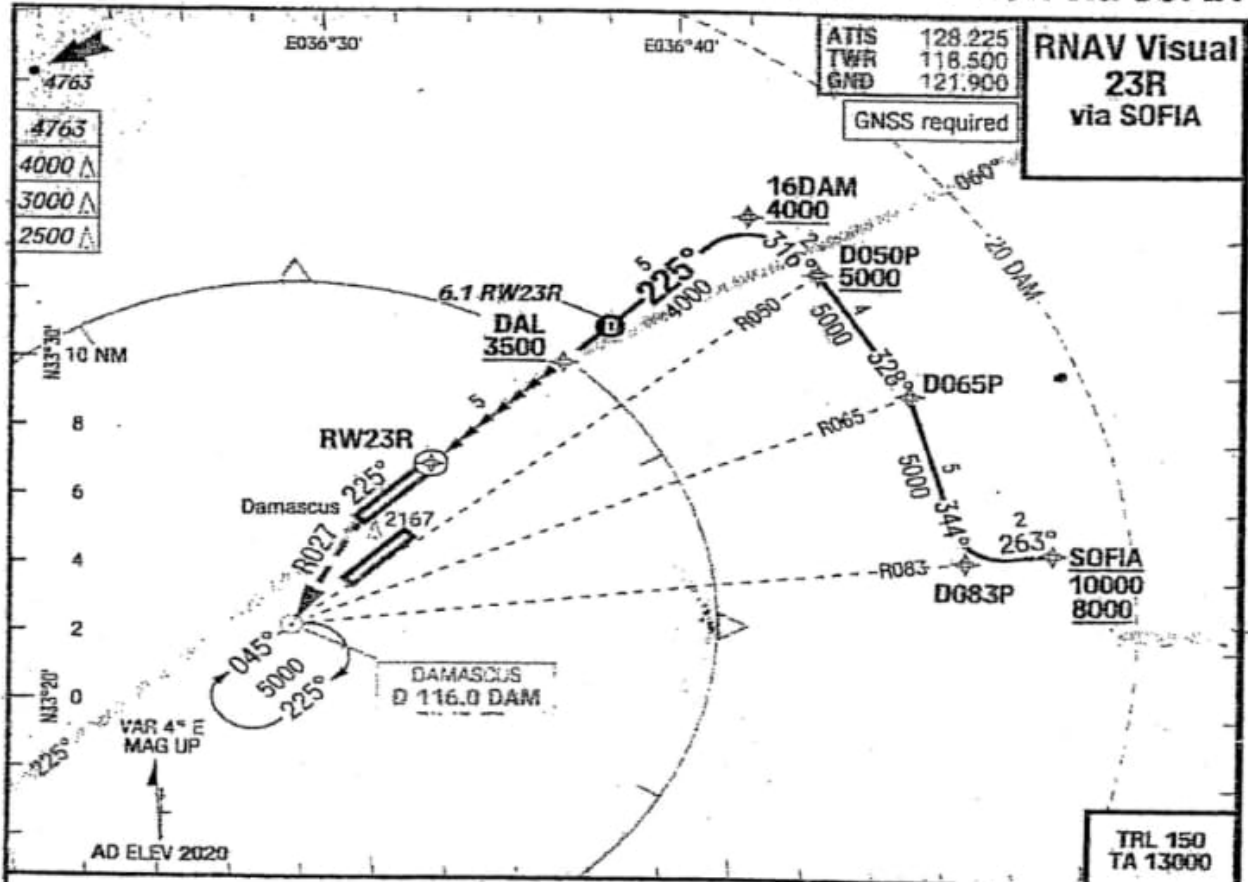
RNAV Visual

ELEV 2020 FT

Damascus Intl

CHART ICAO

RNAV Visual 23R via SOFIA



Visual

+0.1% TDZ ---% 1995 / 70hPa H-P1 RNAV VISUAL RNP 0.3

Route Description:
 SOFIA (MAX 10000, MNM 8000) - D083P - D065P - D050P (MNM 5000) - 16DAM (MNM 4000) - DAL (MNM 3500) - RW23R.

Descent point for 3.00° CDA to RW23R, approximately at 6.1 RW23R.

- Conditions:**
- Select: RNV23R from Nav database.
 - Pilots request "Visual APCH 23R".
 - Pilots must acquire/maintain visual reference to terrain not later than WPT 16DAM.
 - At DAL latest, report "RWY in-sight".

Missed Approach:
 Track 225°, intercept R027 DAM, to DAM, climb 5000.

COORDINATES :

SOFIA	N33230648	E036494001
D083P	N33225768	E036471085
D065P	N33275276	E036455097
D050P	N33313160	E036432405
16DAM	N33331805	E036413320
DAL	N33291518	E036360621
RWY 23R	N33261103	E036315755