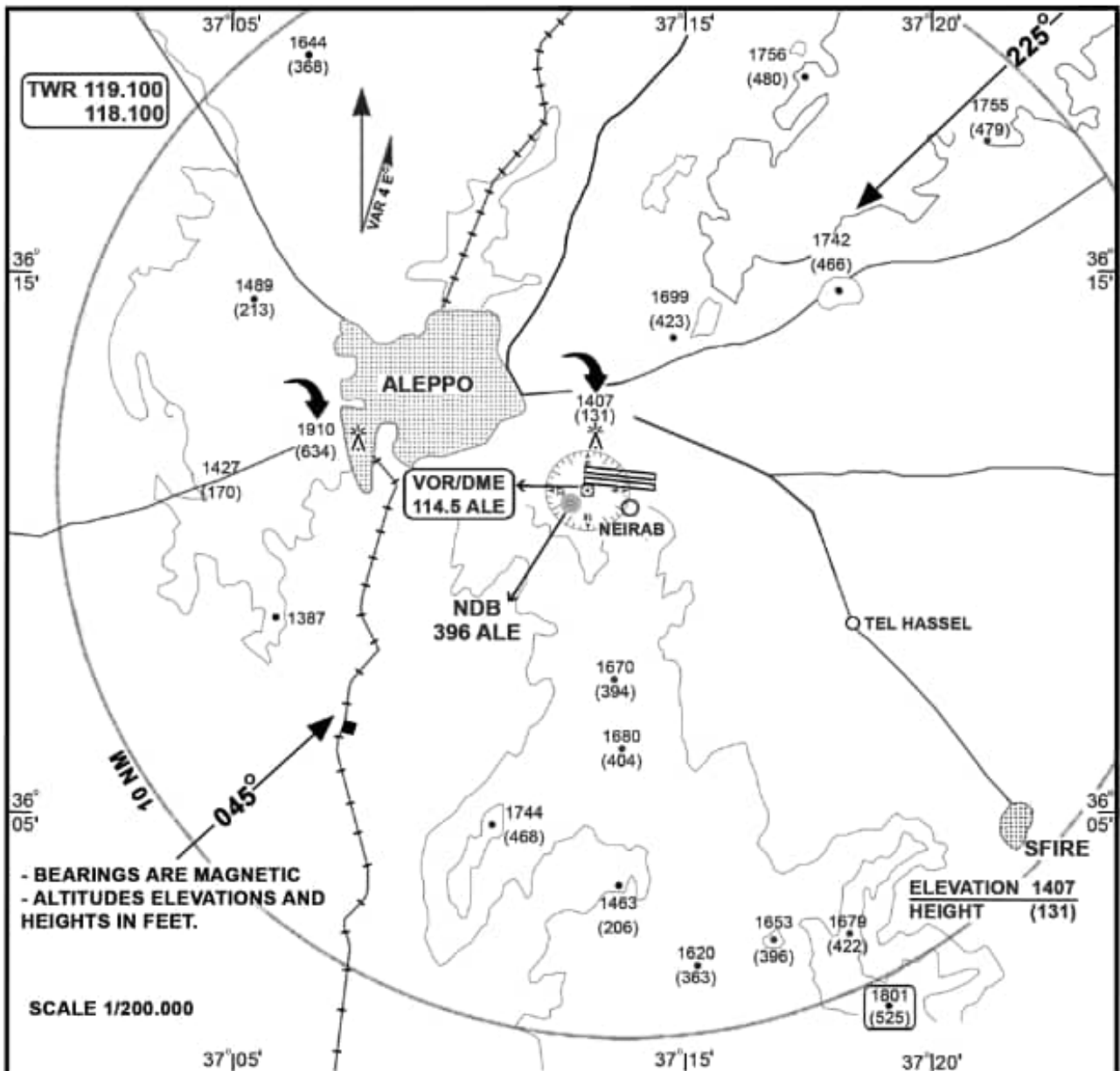


**VISUAL APPROACH
CHART - ICAO**

**ELEV 1276 FT \ 1280 FT
HEIGHTS RELATED
TO THR RWY 27L**

ALEPPO INTL



- 1- ALL TRAFFIC INBOUND TO ALE/INTL AIRPORT SHALL REPORT OVER ALE/VOR AT AN ALTITUDE OF 3500 FT OR ABOVE BEFORE JOINING THE TRAFFIC CIRCUIT UNLESS INSTRUCTED BY A/D CONTROL TWR.
- 2- ALL VFR TRAFFIC DEPARTING ALE/INTL AIRPORT SHALL FOLLOW THE DEPARTURE ROUTES ASSIGNED FOR IFR TRAFFIC .
- 3- THE PILOT HAS TO ESTABLISH AND MAINTAIN VISUAL CONTACT TO THE INTENDED RUNWAY AND THE CONTROLLER HAS TO HAVE THE AIRCRAFT INSIGHT.